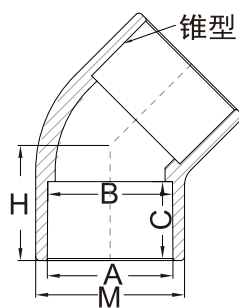




45D ELBOW

(Soc*Soc)

4 5° 弯头



单位:mm

Size	A	B	C	M	L
1/2"	21.62	21.31	22.22	30.03	30.96
3/4"	26.95	26.65	25.40	35.20	34.13
1"	33.75	33.17	28.58	44.26	37.31
1-1/4"	42.52	42.14	33.31	54.17	42.86
1-1/2"	48.68	48.23	34.93	59.84	48.42
2"	60.75	60.05	38.10	72.45	55.56
2-1/2"	73.53	73.00	44.45	87.87	63.50
3"	89.49	88.88	47.63	105.03	73.03
4"	114.96	114.30	57.15	132.92	86.52
5"	142.04	141.23	66.68	161.59	103.98
6"	169.08	168.25	76.20	189.03	120.65
8"	220.19	219.05	101.60	245.24	160.34
10"	274.16	273.02	127.00	307.00	223.84
12"	324.96	323.82	152.40	361.96	265.11
14"	356.83	355.57	180.00	398.83	299.24
16"	410.43	406.24	205.00	452.72	342.90
*18"	459.07	457.16	254.00	510.00	590.00
*20"	510.25	508.09	279.00	570.00	590.00
*24"	612.22	609.55	304.00	680.00	685.00

*表示为加工件