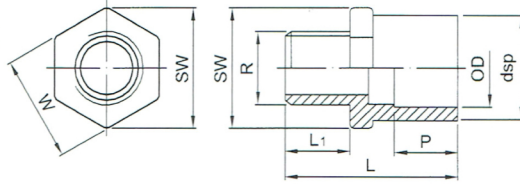


PP-H ADAPTOR

With male thread for socket welding
 套接外牙阀接头



OD (mm)	dsp (mm)	L (mm)	L1 (mm)	P (mm)	R (mm)	WxSW (mm)
20	28.0	46.5	18.5	15.0	1/2" BSP	30.5x33.5
25	34.0	51.5	21.0	17.5	3/4" BSP	37.0x41.0
32	43.0	62.5	24.5	20.0	1" BSP	44.5x49.5
40	51.5	67.0	27.5	21.6	1-1/4" BSP	53.5x59.0
50	63.5	74.5	29.0	24.0	1-1/2" BSP	65.0x72.0
63	79.0	80.0	32.0	28.0	2" BSP	81.1x91.0