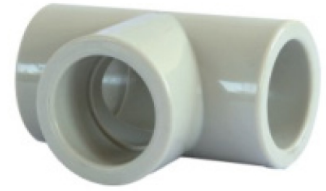
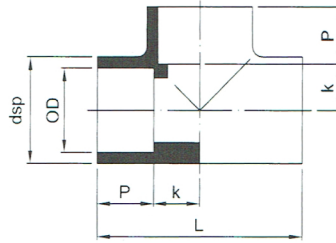


PP-H TEE

for socket welding
 molded from PP-H
 套接三通



OD (mm)	dsp (mm)	k (mm)	P (mm)	L (mm)	SDR11 ISO S5 PN10
					Weight (kg/Pc.)
16	24.0	12.5	14.5	54.0	0.018
20	29.0	14.5	15.5	60.0	0.026
25	35.0	16.9	17.2	68.2	0.042
32	42.7	20.5	19.5	80.0	0.064
40	51.5	25.8	21.2	94.0	0.098
50	64.0	30.0	24.0	108.0	0.164
63	80.5	34.25	28.0	124.5	0.288
75	91.5	43.25	32.5	151.5	0.406
90	113.5	55.1	37.5	185.2	0.810
110	134.5	61.4	43.0	208.8	1.108