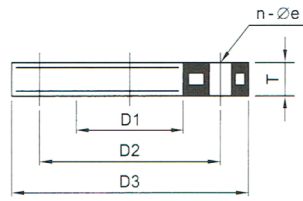


BACKING RING

With steel insert

acc.to JIS standard from PP grey

法兰铁片10K



DN (mm)	D1 (mm)	D2 (mm)	D3 (mm)	e (mm)	n Number	T (mm)
1/2"	28	70	96	15	4	12
3/4"	34	75	100	15	4	14
1"	42	90	125	19	4	14
1-1/4"	51	100	135	19	4	14
1-1/2"	62	105	140	19	4	16
2"	78	120	155	19	4	16
2-1/2"	92	140	175	19	4	16
3"	110	150	185	19	8	18
4"	133	175	210	19	8	18
5"	160	215	250	23	8	20
6"	178	240	280	23	8	21
8"	238	290	330	23	8	21
10"	288	355	400	25	12	24
12"	338	400	445	25	16	26
▲ 14"	376	445	490	25	16	28
▲ 16"	430	510	560	27	16	28
▲ 18"	517	565	620	27	20	30
▲ 20"	533	620	675	27	20	30
▲ 24"	645	730	795	33	24	30

▲ 钢制产品(Steel ones)